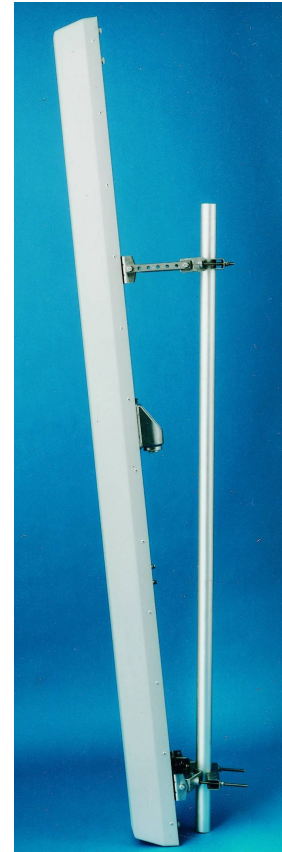


VERTICALLY POLARISED PANEL ANTENNA GSM900 VP/60/17/0, 4 or 10 Type 1687, 1688, 1689

- ❑ HIGH GAIN
- ❑ SUPPRESSED SIDELOBES

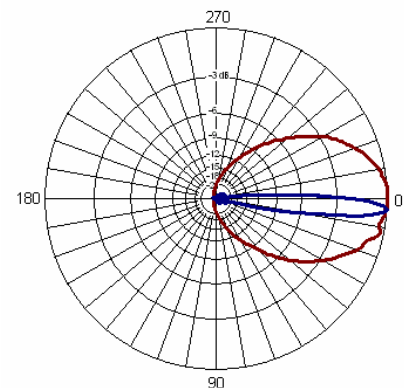
Vertically-polarised panel antennas from Racal have been designed to provide high RF performance, with highly suppressed sidelobes to minimise interference with adjacent cells.

A number of models provide variations in both gain and downtilt to exactly suit the required cell coverage. Superior design coupled with advanced manufacturing techniques guarantee consistent product quality & performance.



TECHNICAL SPECIFICATION

Frequency	870-960 MHz
Gain	17dBi
VSWR	1.3:1 max
Horizontal Beamwidth	60°
Vertical Beamwidth	8°
Fixed Electrical Downtilt	1687:4° 1688: 0° 1689: 10°
Upper Sidelobe Suppression	>20dB
Front-to-Back Ratio	>28dB
Power Rating	500W
Connectors	2 x 7/16" DIN female back
Impedance	50Ω
Dimensions (LxWxD)	2330 x 300 x 145 mm
Wind Loading	1071N @ 45m/s
Operational Wind Speed	45 m/s
Survival Wind Speed	56 m/s
Lightning Protection	DC grounded
Bracket Size	To suit pole 48-115mm
Bracket Downtilt	0°-6° in 1° steps
Temperature Range	- 55 °C to + 65 °C
Weight	16kg



1687 Pattern

INOTEK ANTENNAS LTD

54, Ashdown Road, Chandler's Ford, Eastleigh, Hampshire, SO53 5QJ United Kingdom

Tel: +44 (0) 2380 254289, Fax: +44 (0) 191 3920133, email: sales@inotekantennas.com, www.inotekantennas.com

Inotek Antennas reserve the right to vary in detail from the description and specification in this publication. Issue: 04/07