

## VERTICALLY POLARISED PANEL ANTENNA GSM900 VP/60/11.5/0 Type 1712

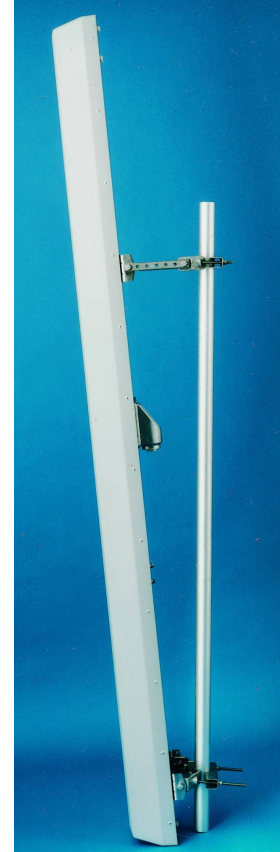
- ❑ 60 DEGREE SECTOR
- ❑ SUPPRESSED SIDELOBES

Vertically polarised panel antennas from Racal have been designed to provide high RF performance, with highly suppressed sidelobes to minimise interference with adjacent cells.

A number of models provide variations in both gain and downtilt to exactly suit the required cell coverage. Superior design coupled with advanced manufacturing techniques guarantee consistent product quality & performance.

### Technical Specification

Frequency	870-960 MHz
Gain	11.5 dBi
VSWR	1.3:1 max
Horizontal Beamwidth	60°
Vertical Beamwidth	19°
Fixed Electrical Downtilt	0°
Upper Sidelobe Suppression	>15dB
Front-to-Back Ratio	>23dB
Power Rating	300W
Connectors	7/16" DIN female bulkhead
Impedance	50Ω
Dimensions (LxWxD)	990 x 300 x 145 mm
Temperature Range	-30°C to +50°C
Wind Loading	388N @ 45m/s
Operational Wind Speed	45 m/s
Survival Wind Speed	56 m/s
Lightning Protection	DC grounded
Weight	6.3kg
Bracket Size	To suit pole 48-115mm
Bracket Downtilt	+6 to -6°



INOTEK ANTENNAS LTD

54, Ashdown Road, Chandler's Ford, Eastleigh, Hampshire, SO53 5QJ United Kingdom

Tel: +44 (0) 2380 254289, Fax: +44 (0) 191 3920133, email: sales@inotekantennas.com, www.inotekantennas.com

Inotek Antennas reserve the right to vary in detail from the description and specification in this publication. Issue: 04/07