

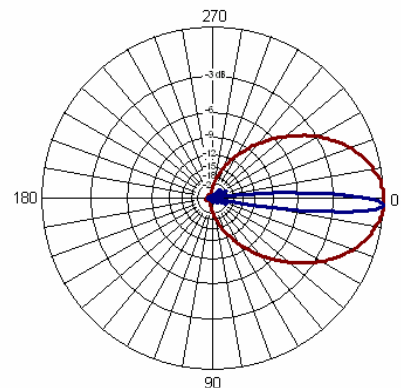
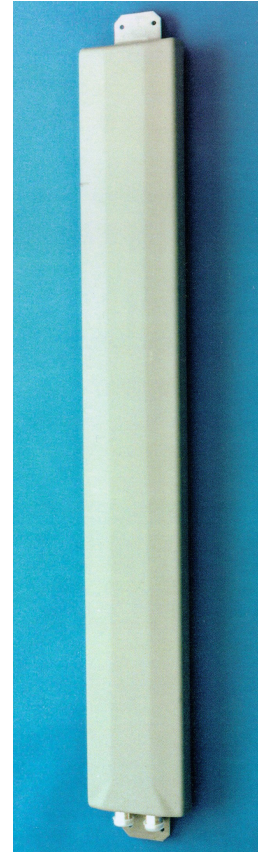
DUAL POLARISED PANEL ANTENNA GSM1800 XP/60/18/2, 4 or 6 Type 1865, 1866, 1867

- ❑ HIGH GAIN
- ❑ LOW-PROFILE RADOME

The GSM1800 base station antennas are available with 60 or 85° sector coverage, and include suppressed sidelobes as a standard feature. A number of models provide gain & fixed electrical downtilt to exactly suit the location. Superior circuit design coupled with advanced manufacturing techniques guarantee consistent product quality, with excellent intermodulation performance.

TECHNICAL SPECIFICATION

Frequency	1710-1880MHz
Gain	18dBi
VSWR	1.4:1 max
Horizontal Beamwidth	60°
Vertical Beamwidth	8°
Fixed electrical downtilt	1865 - 2° 1866 - 4° 1867 - 6°
Upper sidelobe suppression	>19dB
Front-to-back ratio	>25dB
Isolation between ports	>28dB
Connectors	2 x 7/16" DIN female bulkhead
Power rating	250W
Operational wind speed	45m/s
Survival wind speed	56m/s
Wind loading	312N @ 45m/s
Bracket downtilt	0°-10° or 10°-20°
Dimensions (LxWxD)	1260 x 164 x 45 mm
Weight	3.8kg
Temperature Range	-55°C to +65°C



1865 PLOT